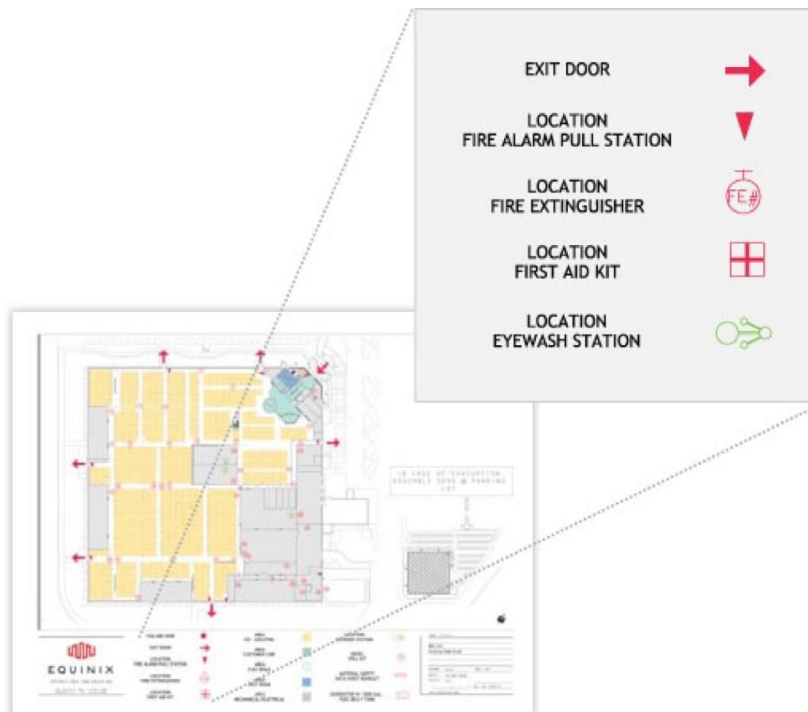


GLOBAL IBX EMERGENCY PROCEDURES

IBX Building Evacuation

⚠️ Follow all directions given by staff.

- When a building fire alarm signal sounds, all persons should evacuate the building calmly and quickly.
- Follow the lighted EXIT signs posted throughout the IBX center to find the nearest exit.
- Maps showing evacuation routes are also posted in each IBX center.
- If the IBX center is in a multilevel building, visitors will be directed to use designated stairways when evacuating the building. Do not use elevators.
- All individuals will be directed to meet in a designated assembly area outside the building, and to check in with a designated Equinix staff member.
- Using the visitor sign-in sheet as the official evacuation list, an IBX staff member will verify that all visitors have been evacuated from the building.



SAMPLE MAP — Look for maps showing evacuation routes posted in each IBX.

Re-entering the Building

⚠️ DO NOT RE-ENTER the IBX until instructed by security.

To help prevent potential injury or property loss, and to ensure unauthorized personnel do not enter the IBX, all persons must be re-admitted to the IBX as directed by security or IBX site staff.

Both IBX security and site staff will document the evacuation and related incidents.